

FUEL PUMP TROUBLESHOOTING GUIDE

1997-2001 2.0L Honda CR-V

TABLE OF CONTENTS

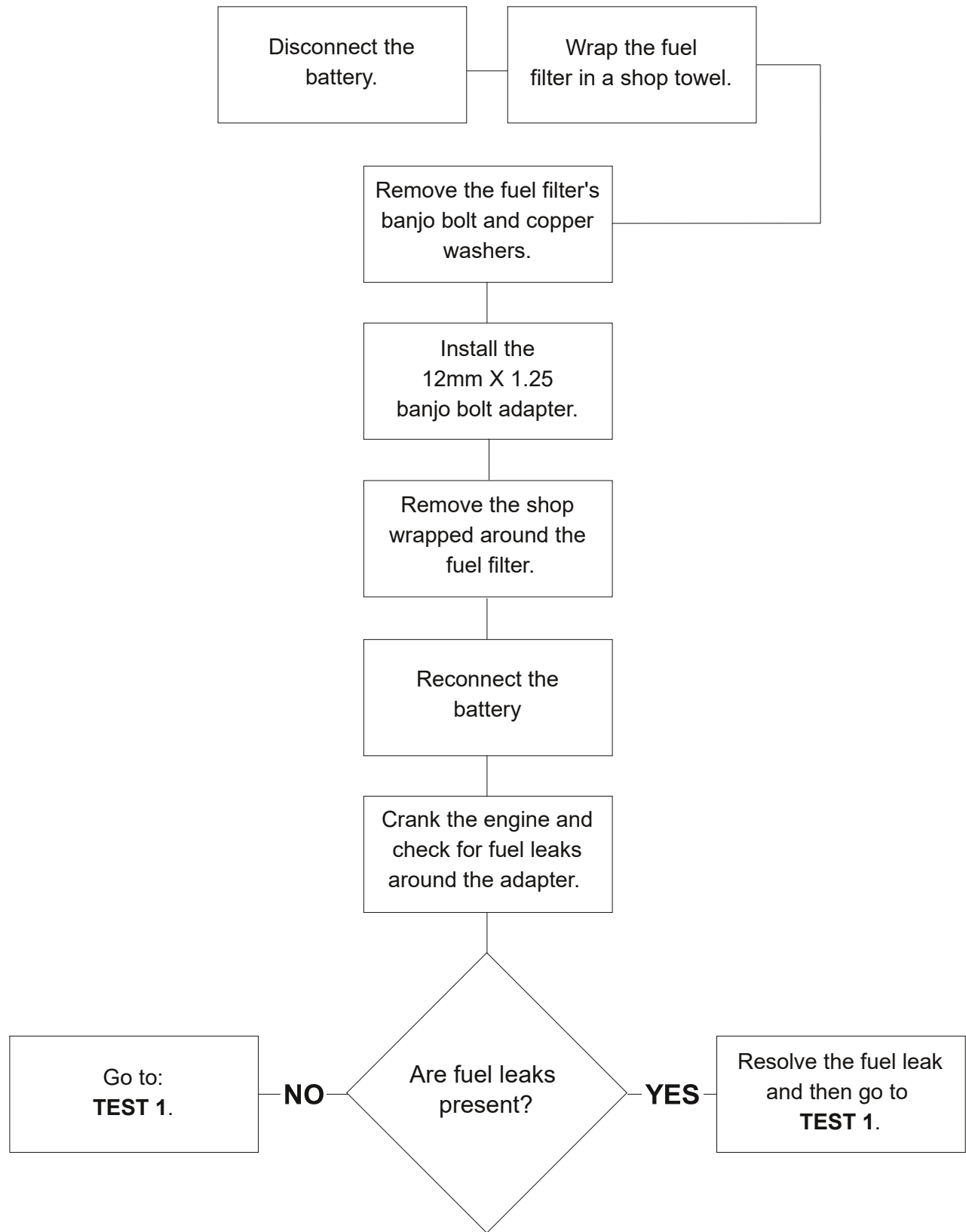
PRE-TEST: INSTALLING THE FUEL FILTER ADAPTER.....	2
TEST 1: CHECKING FUEL PRESSURE.....	3
RESOURCES.....	4

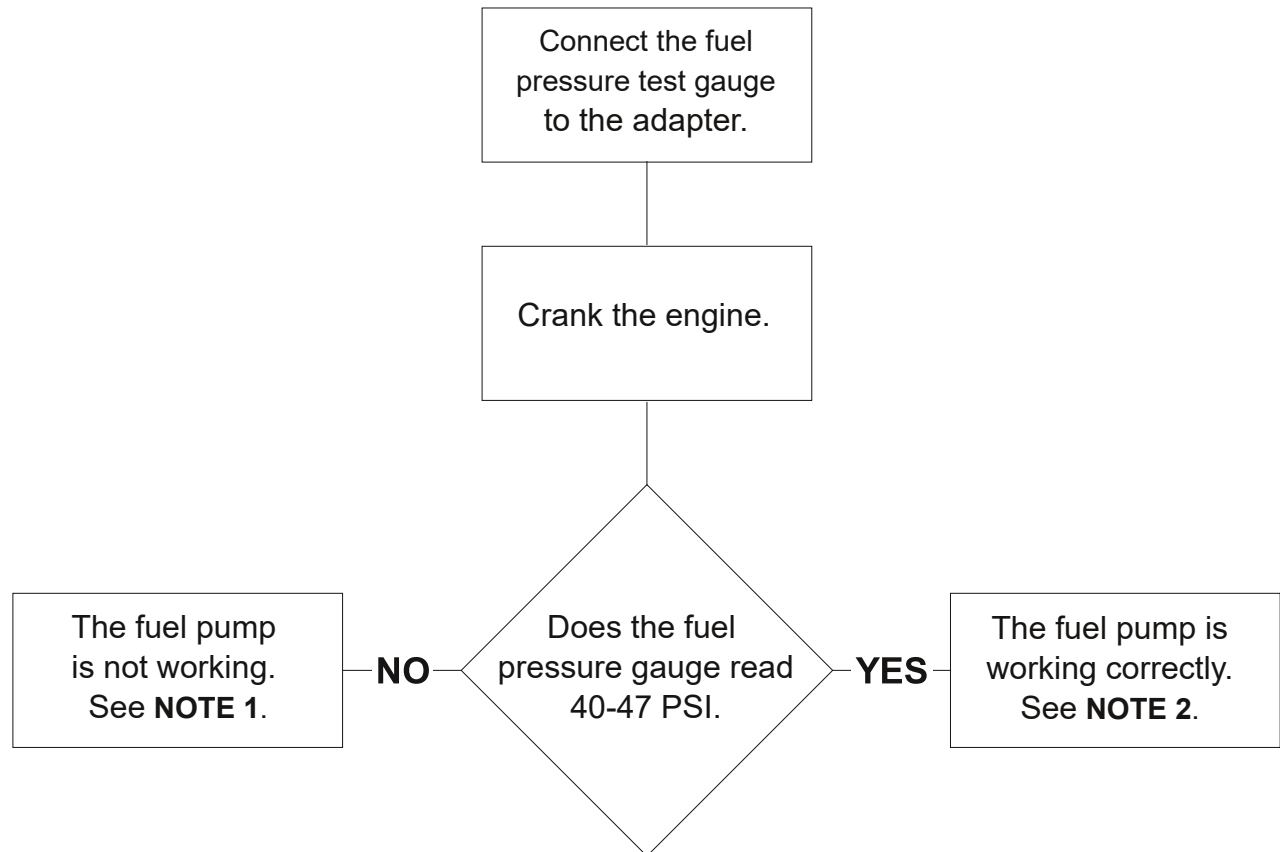
When the fuel pump fails on the 1997-2001 2.0L Honda CR-V, the engine is not gonna' start. Thankfully, testing the fuel pump to see if it's defective or not is not difficult. With a few basic hand tools and a fuel pressure tester (like the ACTRON CP7838) you can test it yourself and save time and money.

In this guide you'll find the basic diagnostic flow of how I test the fuel pump. To further help you, I've also created a youtube video that ties-in with this guide. The on-line tutorial at easyautodiagnosics.com will also help you.

If you're reading this guide on an electronic device (PC, laptop, etc), you can click on the links and open them in your device's default browser. The clickable links will have the following symbol: ↗.

At the end of this guide you'll find the links to more information and tutorials for the 1997-2001 2.0L Honda CR-V.





NOTE 1: This test result lets you know that the fuel pump is not supplying fuel to the fuel injectors. The engine will not start if it's not getting fuel.

NOTE 2: This test result confirms that the fuel pump is working and supplying fuel to the fuel injectors. If your 1997-2001 2.0L Honda CR-V is not starting, then you have eliminated the fuel pump as the source of the no-start problem.

The following resources are for the 1997, 1998, 1999, 2000, and 2001 2.0L Honda CR-V. If you're reading this PDF on an electronic device, you can click on the links.

Youtube video that explains the fuel pump test:

↗ <https://www.youtube.com/watch?v=BRkFkorcq60>

Fuel pump test tutorial at easyautodiagnosics.com:

↗ <https://easyautodiagnosics.com/honda/2.0L/fuel-pump-tests-1>

You can find a complete list of tutorials for the 2.0L Honda CR-V here:

↗ <https://easyautodiagnosics.com/honda/2.0L/index-of-articles-1>